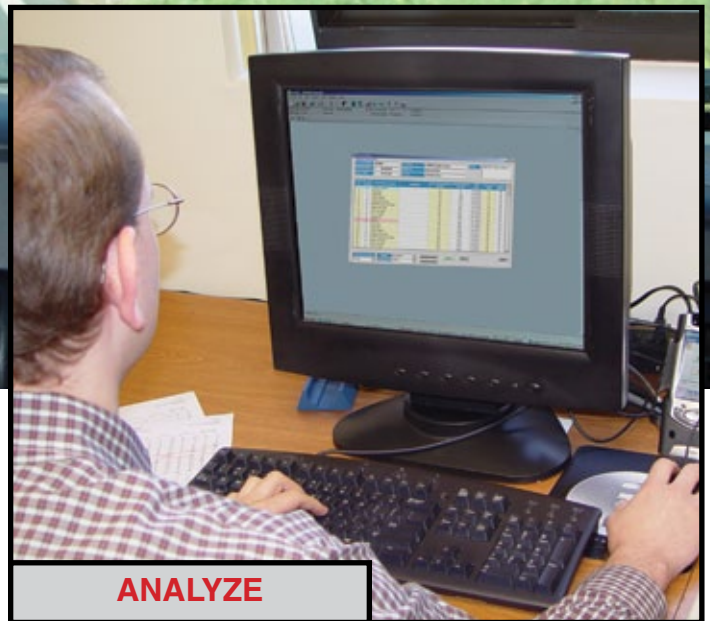


# WinRAC Plus

COLLECT



ANALYZE

REPORT



## Survey Software for the RAC Plus III

- Download Stored Survey Data
- Edit and Analyze Survey Data
- Displays Distance & GPS Data
- Generate Comprehensive Reports



**JAMAR**  
Technologies, Inc.

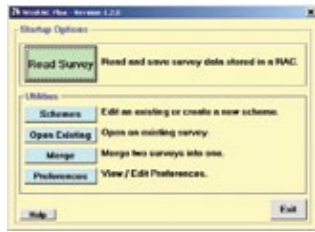
*Making Data Collection Easier*

WinRAC Plus is a powerful software program designed by JAMAR Technologies to allow you to interface with the RAC Plus III distance measuring instrument. This program can be used to retrieve stored data events from the RAC Plus III to a computer.

Once the data is in WinRAC Plus, it can be easily edited in a familiar spreadsheet style. Comprehensive reports can then be generated. The software comes complete with RAC Plus power supply, connection cable & manual.

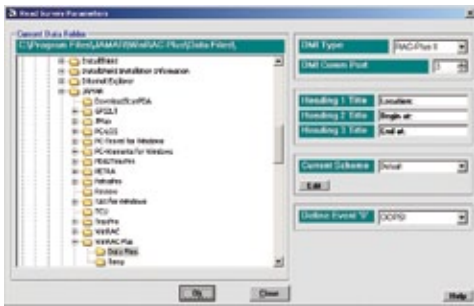
### Quick Start Wizard

Each time you run WinRAC Plus, the Startup Options screen will appear first. The buttons on this screen correspond to the main features you can access in WinRAC Plus, and enable you to get started quickly.



### Easy Downloading

Simple point and click selections from WinRAC's toolbar icons make functions like downloading data easy to do. Once you have set-up the download screen with the settings desired, simply hook up your RAC Plus III and start downloading.



### Produce Reports

A comprehensive report of your survey data can be easily created and output to either a printer or electronic PDF format.

The finished report can show event codes and descriptions, any comments you have entered, interval distance from one event to the next, total distance from the start of the survey to the event, elapsed and real time, traveling speed at the time of the event, the GPS coordinates of the event and GPS accuracy information.

Setup options allow you to include or exclude any of these categories on the report.

#### Computer Requirements

Windows 98 or higher, 64 MB Ram, 20 MB free disk space, available serial port or USB port with adapter, CD drive for installation

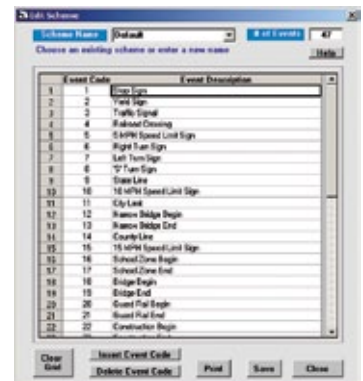
### GPS Compatible

WINRAC Plus is fully compatible with the GPS data that is collected with the RAC Plus III DMI. Once downloaded the event codes will appear in the software with their GPS latitude and Longitude as an integral part of the report data



### Create Survey Schemes

With WinRAC Plus, you can use different sets of Event Descriptions for different surveys. These sets of descriptions are called Schemes and you can store multiple sets of schemes in the program for easy application.



**Organization Title Goes Here**  
Heading Second Line  
Heading Third Line  
**WinRAC Plus Survey Report**

Location: Hershorn Loop  
Begin at: 151 Keith Valley Road  
End at: 151 Keith Valley Road

Survey Name: Sample Survey with GPS  
Survey Date: 04/02/07  
Page No. : 1

Event #	Event Code	Event Description	Comments	Interval Distance	Total Distance	Elapsed Time	Real Time	Speed	Latitude	Longitude	HDOP	Fix	Man Sets
1	11	START Survey		0	0	00:00:00	00:00:00	0	42.211657	-75.152261	1.2	2	0
2	12	30 MPH Speed Limit		1004	1004	00:00:29	00:00:29	45	42.211657	-75.152261	1.2	2	0
3	13	Intermittent Light		1117	2121	00:00:59	00:01:21	45	42.211657	-75.152261	1.2	2	0
4	14	Warning Bridge Ahead		180	2304	00:01:11	00:01:43	45	42.211657	-75.152261	1.2	2	0
5	15	30 MPH Speed Limit		180	2484	00:01:23	00:01:48	45	42.211657	-75.152261	1.2	2	0
6	16	30 MPH Speed Limit		250	2734	00:01:29	00:01:59	45	42.211657	-75.152261	1.2	2	0
7	17	Math Event		117	4917	00:01:57	00:02:29	45	42.211657	-75.152261	1.2	2	0
8	18	Intermittent Light		87	4132	00:02:10	00:02:29	45	42.211657	-75.152261	1.2	2	0
9	19	30 MPH Speed Limit		218	4351	00:02:38	00:03:11	38	42.211657	-75.152261	1.2	2	0
10	20	20 MPH Speed Limit		498	4850	00:03:11	00:03:20	31	42.211657	-75.152261	1.2	2	0
11	21	20 MPH Speed Limit		268	5118	00:03:28	00:03:29	45	42.211657	-75.152261	1.2	2	0
12	22	30 MPH Speed Limit		250	5368	00:03:10	00:03:49	39	42.211657	-75.152261	1.2	2	0
13	23	Traffic Signal		371	5739	00:03:28	00:04:02	34	42.211657	-75.152261	1.2	2	0
14	24	40 MPH Speed Limit		371	6110	00:03:28	00:04:14	44	42.211657	-75.152261	1.2	2	0
15	25	Intermittent Light		268	6378	00:03:28	00:04:24	44	42.211657	-75.152261	1.2	2	0
16	26	40 MPH Speed Limit		452	6830	00:03:16	00:04:42	17	42.211657	-75.152261	1.2	2	0
17	27	Intermittent Light		117	6947	00:03:16	00:04:47	18	42.211657	-75.152261	1.2	2	0
18	28	30 MPH Speed Limit		122	7069	00:03:18	00:04:47	18	42.211657	-75.152261	1.2	2	0
19	29	Warning Bridge Ahead		922	8091	00:03:38	00:05:28	9	42.211657	-75.152261	1.2	2	0
20	30	30 MPH Speed Limit		181	8272	00:03:38	00:05:30	30	42.211657	-75.152261	1.2	2	0
21	31	Intermittent Light		1211	9483	00:03:41	00:05:31	28	42.211657	-75.152261	1.2	2	0
22	32	30 MPH Speed Limit		1601	11084	00:03:50	00:05:11	26	42.211657	-75.152261	1.2	2	0
23	33	Math Event		143	11227	00:03:40	00:05:18	13	42.211657	-75.152261	1.2	2	0
24	34	Intermittent Light		29	11256	00:03:40	00:05:25	21	42.211657	-75.152261	1.2	2	0
25	35	40 MPH Speed Limit		29	11545	00:03:40	00:05:25	21	42.211657	-75.152261	1.2	2	0
26	36	Intermittent Light		1209	11819	00:03:19	00:05:31	42	42.211657	-75.152261	1.2	2	0
27	37	40 MPH Speed Limit		342	12161	00:03:29	00:05:04	36	42.222222	-75.151818	1.2	2	0
28	38	30 MPH Speed Limit	Event Items to be cleared	268	12429	00:03:41	00:05:18	28	42.211657	-75.152261	1.2	2	0
29	39	Traffic Signal		718	13147	00:03:38	00:05:31	18	42.211657	-75.152261	1.2	2	0
30	40	Intermittent Light		85	13232	00:03:30	00:05:31	31	42.211657	-75.152261	1.2	2	0
31	41	30 MPH Speed Limit		175	13407	00:03:30	00:05:31	31	42.211657	-75.152261	1.2	2	0
32	42	30 MPH Speed Limit		175	13582	00:03:30	00:05:31	44	42.211657	-75.152261	1.2	2	0
33	43	Warning Bridge Ahead		442	14024	00:03:27	00:05:39	46	42.217817	-75.152777	1.2	2	0
34	44	Warning Bridge Ahead		181	14205	00:03:28	00:05:32	37	42.217817	-75.152777	1.2	2	0
35	45	30 MPH Speed Limit		463	14668	00:03:41	00:05:18	28	42.211657	-75.152261	1.2	2	0
36	46	Intermittent Light		158	14826	00:03:41	00:05:18	18	42.211657	-75.152261	1.2	2	0
37	47	PAUSE Survey		158	15000	00:03:41	00:05:18	0	42.211657	-75.152261	1.2	2	0

Survey Notes:  
None