

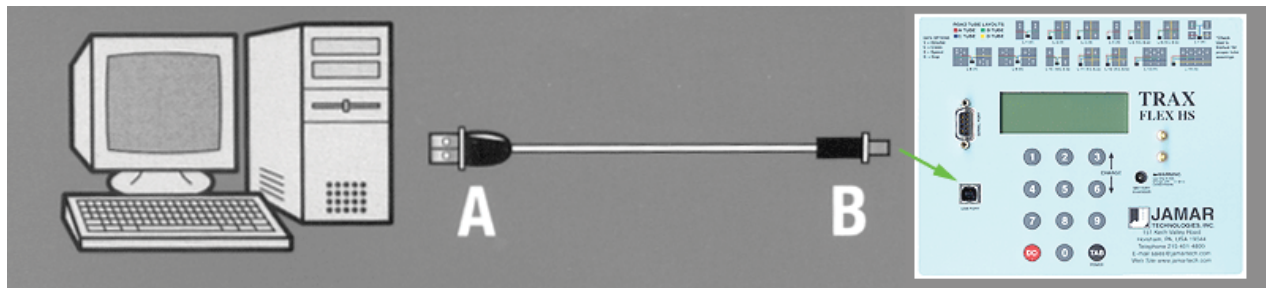
Note that installing and using the USB drivers for the TRAX Flex HS is only recommended for the Windows XP or higher operating systems. It may not work correctly for Windows 98, ME or 2000. We recommend using the Serial Port download for these operating systems.

The first time you are downloading the TRAX Flex HS to a computer using the USB port, you will need to install the drivers for it. There are two drivers that will be installed, one right after the other. These drivers are available on this web site at [Downloading USB Drivers for the TRAX Flex HS](#), on the installation CD for the TRAXPro software, and as part of the Windows Update feature available from Microsoft using an Internet connection.



[View Demonstration](#)

To install the drivers, first connect a USB cable to your computer and then to the USB port of the TRAX.

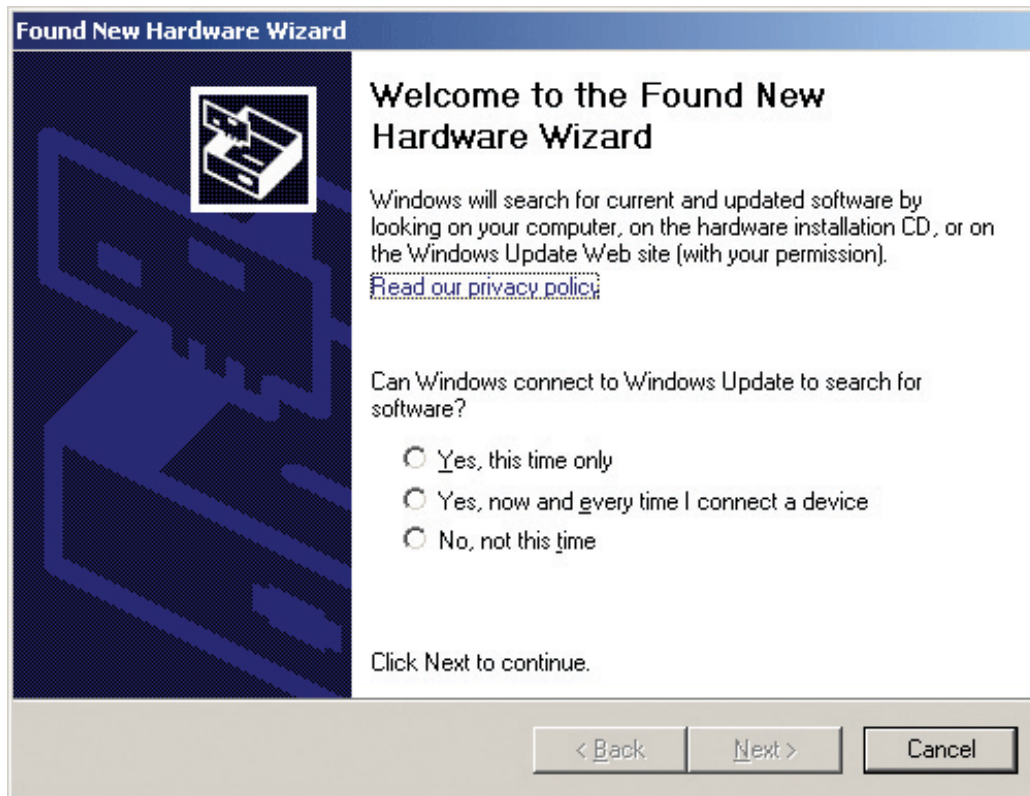


Next, turn the TRAX on.

The Windows 'Found New Hardware' message will pop up, referencing JAMAR TRAX USB 232, then the Found New Hardware Wizard will appear.

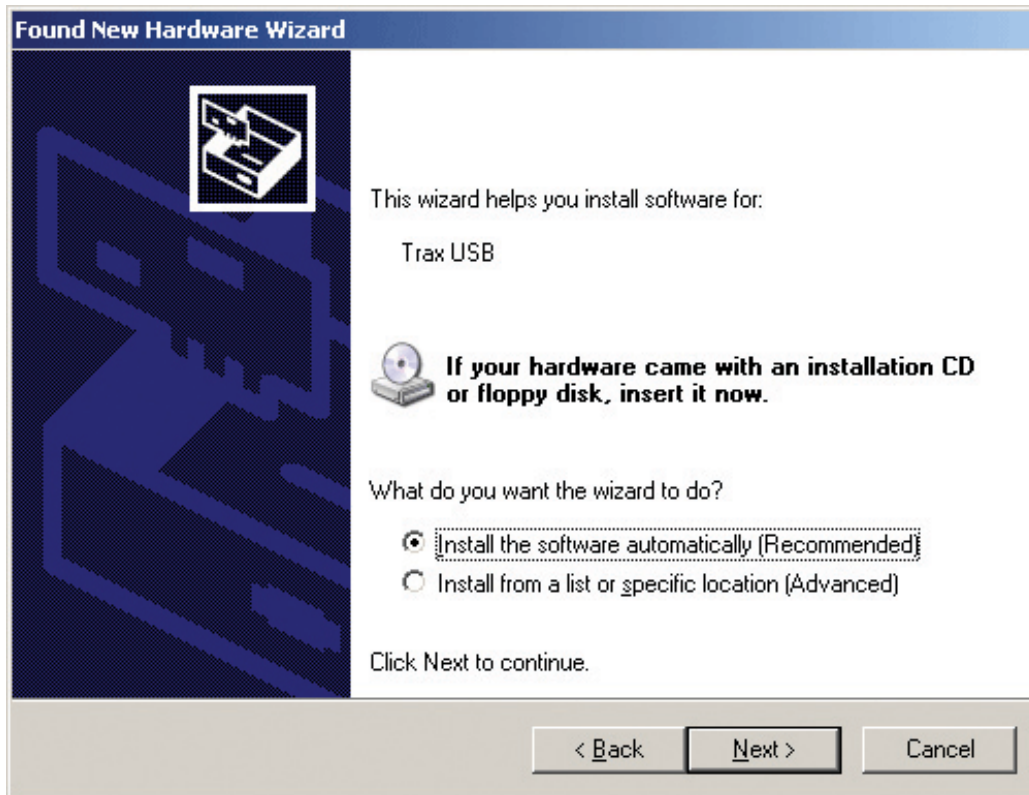
One of the features of Windows XP is to use your Internet connection to search the Windows Update web site for any available drivers for USB devices you connect to your computer, like the TRAX Flex HS. If you have not used this feature before, you'll first see a screen like the one shown here when you first connect the TRAX.

The drivers for the TRAX are available through this feature, so if you'd like to allow the wizard to connect to the Internet, select one of the first two options and click Next.

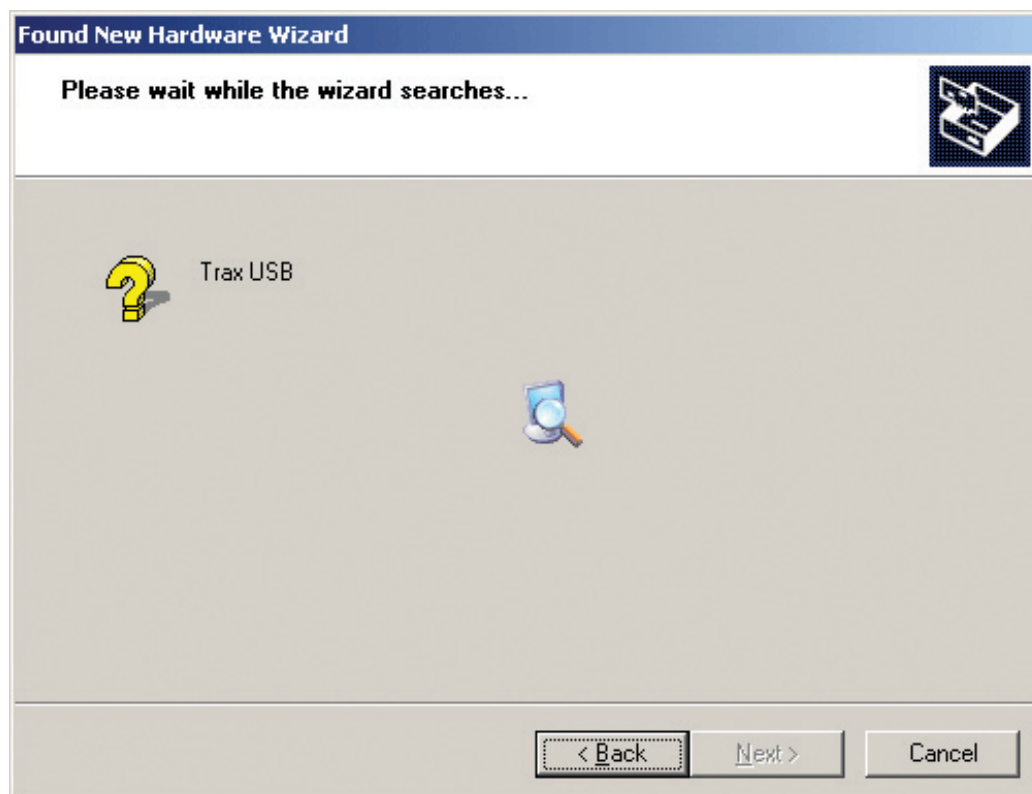


After you click Next (or if you have previously instructed Windows to always check the Windows Update web site for drivers), you'll see the screen shown below. This screen is used to tell Windows where to look for the drivers it needs. We recommend using the first selection, Install the Software Automatically.

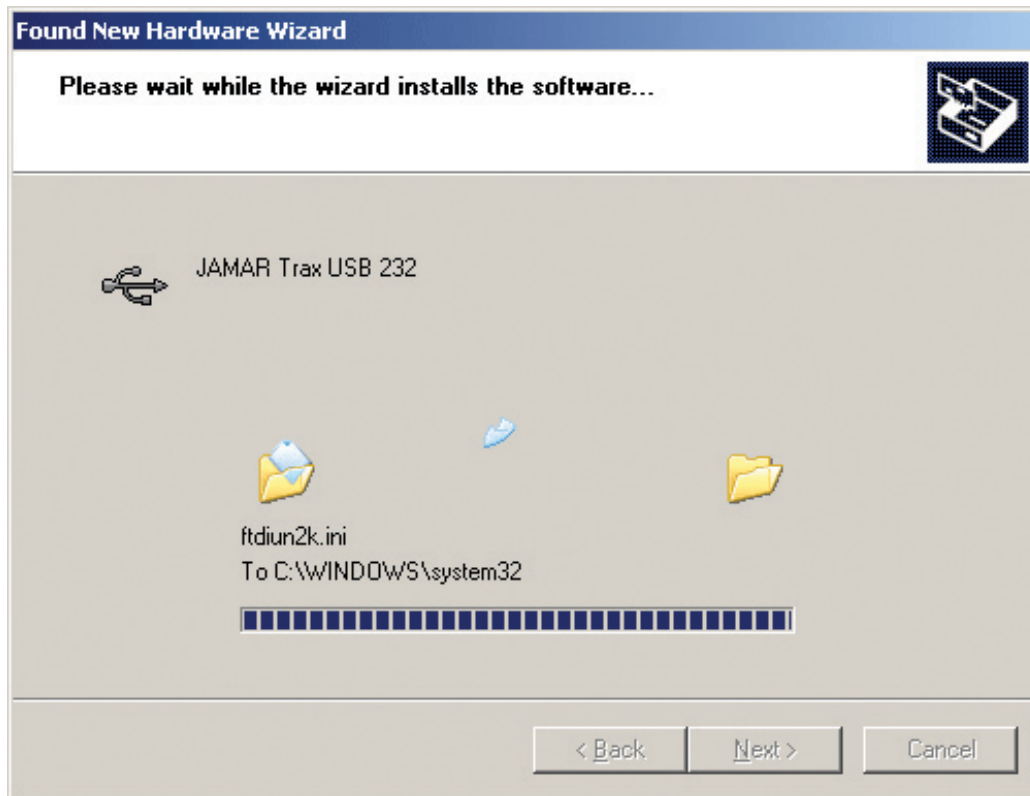
Note that whenever possible we recommend you use the drivers available through the Windows Update web site as this is the easiest method for loading the drivers and is done automatically during the Found New Hardware . However, if you are not able to use the Windows Update web site, the drivers are also available on the Downloads section of the JAMAR web site and TRAXPro installation CDs for versions later than 1.7.1. If you are downloading the drivers from the JAMAR web site, be sure to follow the directions listed there. If you would like to use the drivers on the TRAXPro CD, insert the CD into your drive.



Once you are ready to proceed, click Next. The Wizard will then start searching for the best available drivers and you'll see a screen like the one shown here.



Once the wizard is finished searching, it will begin to load the driver it has found and you'll see a screen like the one shown here.



Note that if the Wizard finds more than one driver (like if you are using Windows Update and also have a TRAXPro CD in you drive), the Wizard will list all the available drivers. You can then select the one you'd like and then proceed.

When the driver is finished installing you'll see a screen like the one shown here.

Click Finish and you'll complete installing this driver, but there's still one more to go.



Once you click Finish, the Windows 'Found New Hardware' message will pop up again, referencing a USB Serial Port, and the Found New Hardware Wizard will reappear, as shown here. Don't be alarmed, this is what's supposed to happen. There is a second driver that needs to be installed to create a virtual serial port.

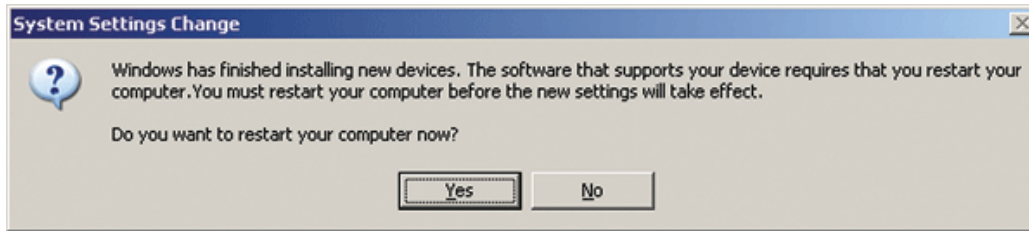


To install this second driver, follow the same steps as the first.



Once the second driver is installed, you may see a message like the one below, prompting you to restart your computer.

Restart your computer to complete the process of installing the drivers.



The process of installing the USB drivers has created a virtual com (serial) port on your computer and assigned this port a number from 1 to 16. You will need to select this comm port number in TRAXPro when you go to download your TRAX. TRAXPro makes this easier to do by only listing the comm ports that are available in the download screen. However, if you want to check to see what port number the virtual comm port has been assigned, you can do so through the computer's Device Manager list.

To access this information, right-click on the My Computer icon then select Properties. In the System Properties window, click on the Hardware Tab, then click the Device Manager button. Click the plus sign (+) next to Ports and you should see a list similar to the one shown here, showing the port number that your computer has assigned.

